

Planning Commission Update

Planning Workgroup Activities Supporting Light
Rail Expansion in Seattle

Today's Agenda

1. COVID-19 Impacts - ST Resources
2. Co-Planning
3. Racial Equity Toolkit
4. Design Guidance
5. FTA TOD Grant Update
6. Additional Updates
 1. 130th Street
 2. Graham Street



Impacts of COVID-19 ST Resources



Seattle

Sound Transit Realignment

Primary Webpage

<https://www.soundtransit.org/system-expansion/realignment>

Information on Revenue Shortfall

<https://www.soundtransit.org/sites/default/files/documents/capital-program-cost-estimate-growth-and-response-actions-memo-20210107.pdf>

Board Briefing Book

<https://www.soundtransit.org/st-sharepoint/download/sites/PRDA/ActiveDocuments/Realignment%20Board%20Briefing%20Book-Revised%20Jan%202021.pdf>

Contact: Leda Chahim



Co-Planning



Seattle

Core Responsibilities



- ✓ Routes and station locations
- ✓ Light rail guideway and station design
- ✓ Environmental review

**Co-planning
stations with
communities**



- ✓ Community planning and station access
- ✓ Land use and zoning
- ✓ Street and right-of-way use



Station



Station Context



Station Area

Industrial/Maritime Strategy

- Discuss strategies and actions with stakeholders
- Land use/zoning options to come
- “Mini” agency workshops with Port and Sound Transit – Q2

Contact: Geoff Wentlandt



Early Efforts

- C/ID and Jackson Hub
- Westlake
- Delridge



Interagency Co-Planning in 2021

- Scope concurrence and technical review efforts
- Agency workshop reconciliation
- Industrial/Maritime Co-ordination
- Equitable Transit-Oriented Development



Add'l Planning Issues in Station Area

- Interim Controls?
- Zoning Strategy beyond I/M
- Joint engagement strategy during and Post-COVID
- Equitable Transit-Oriented Development



Racial Equity Toolkit



Seattle

Racial Equity Toolkit

Project-wide

- Enhance mobility and access
- Create opportunities for equitable development
- Avoid disproportionate impacts
- Meaningfully involve community



Racial Equity Toolkit

C-ID

- Limit harmful impacts
- Maximize connections for all users
- 100-year vision for future generations, communities of color, and low-income populations

Delridge

- Excellent bus and rail integration
- Equitable transit-oriented development serving the community



Racial Equity Toolkit

Additional Ideas

- Ensure a sense of belonging for communities of color at all stations
- Create opportunities for community identity at each station
- Expand housing and job access in high opportunity areas for communities of color
- Incorporate design for essential services early in design process
- Ensure bus re-routing around stations does not make transit service worse for communities of color
- Ensure community-facing material representing design direction centers race, poses RET questions to community, and authentically shares where we are in the work.



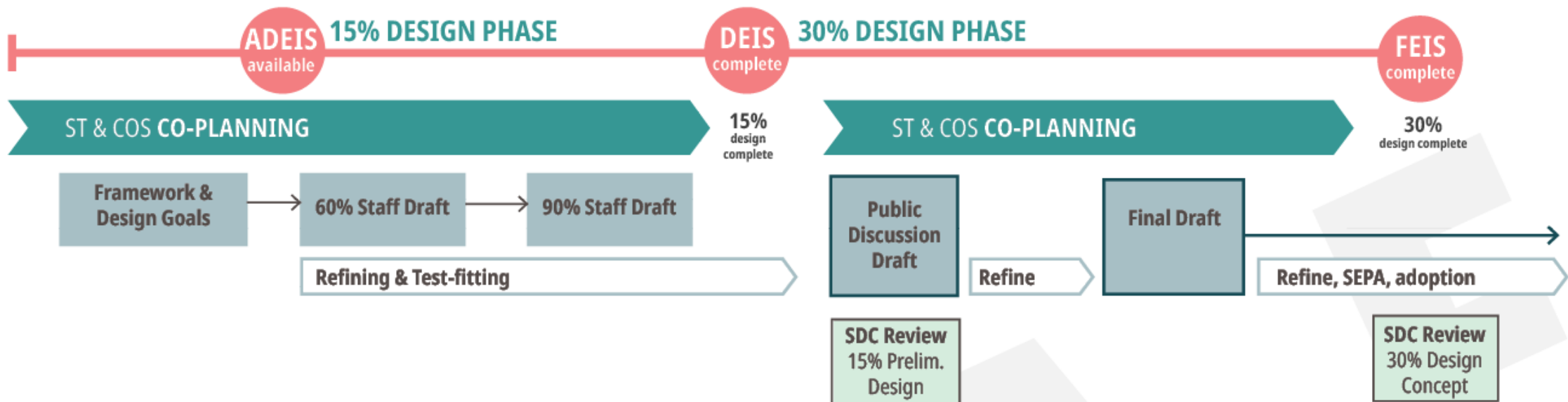
Design Guidance



Seattle

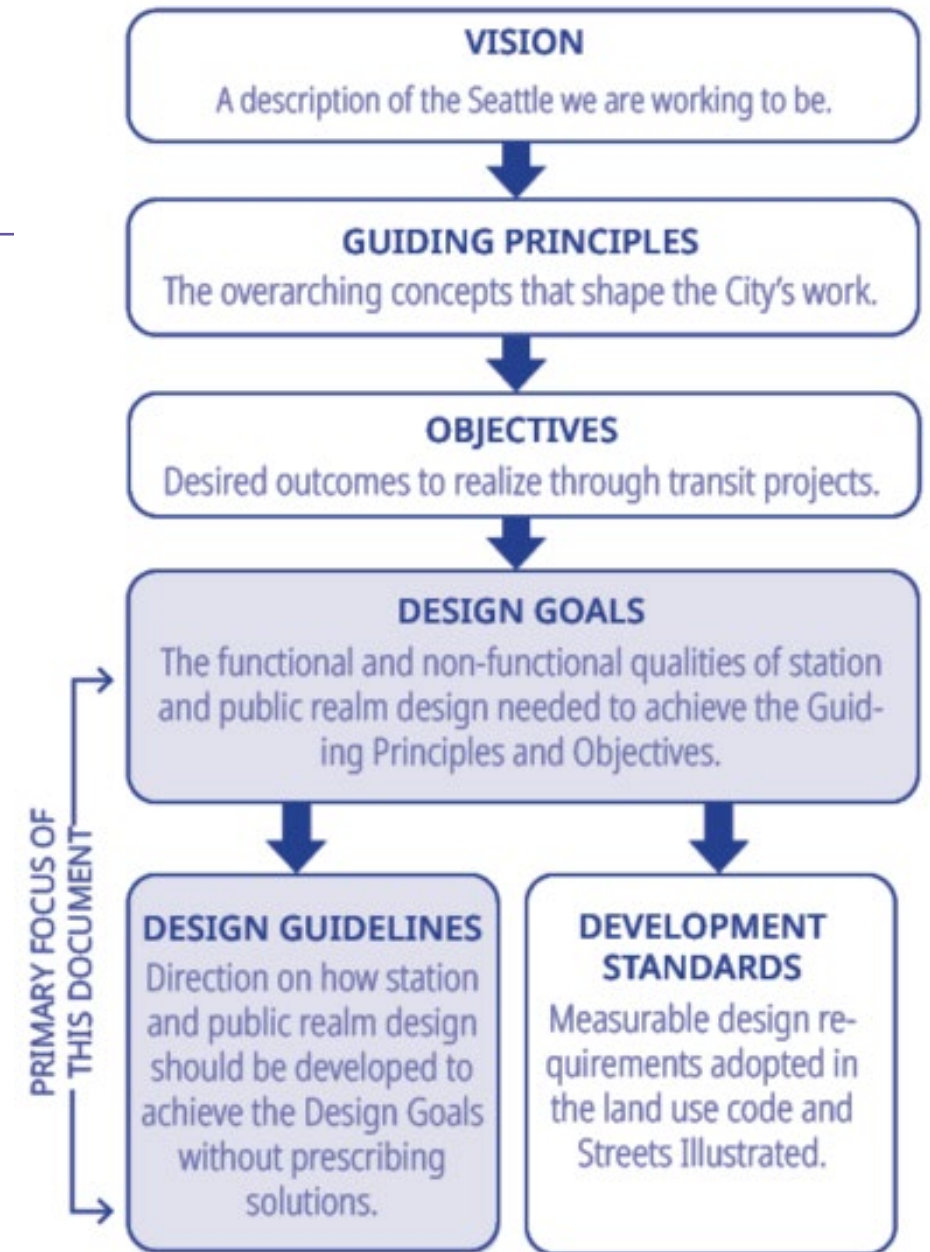
Process & Milestones

- Ongoing Co-Planning
 - Meeting series focused on sharing information and development of Design Tools
- Internal Coordination
 - Developing Guidelines in coordination with development



Design Guidelines in Context

The Design Guidelines help implement the City's ST3 vision, guiding principles, and objectives.



Document Organization

INTRODUCTION

Background

Purpose

Scope

Design Goals

GUIDELINES

A. Context Analysis

B. Design Fundamentals

C. The Station

D. Public Realm

E. Special Structures

DESIGN RESPONSE & EVALUATION

Prompts & Response

Evaluation Tool

Design Goals

**Advance
Equity**

**Put People
First**

**Strengthen
Community**

**Harness
Economic
Benefit**

**Enhance
Neighborhood
Identity**

**Optimize the
Mobility
Network**

Design Guidelines

DESIGN FUNDAMENTALS

- Center Racial Equity in Design
- Places of Civic & Community Pride
- Positive User Experience
- Movement & Modal Balance
- Rider Essentials & Amenities
- Sustainability & Adaptability


STATION DESIGN

- Siting Station Box & Entries
- Station Site & Buildings
- Station Circulation
- Rider Amenities
- Designing the Spaces
- Additional Guidance by Station Type

THE PUBLIC REALM

- Balance Movement with Place
- Designing for Movement
- Place & Public Life

SPECIAL STRUCTURES

- Guideways
 - Over water crossings
 - Portals
 - Misc. Equipment
 - Columns
- 

Next Steps

- Online workshops with Boards & Commissions
- Continue working with SDC
 - Guidelines
 - Prompts
- Continuing coordination with ST
 - Community engagement
 - Future in-depth discussions about design guideline content & specifics
 - Resolving conflicts
 - Communication COS design expectations

FTA TOD Grant Update



Seattle

Race and Social Justice

- Using the lens of accountability to our communities of color to bolster decision-making
- Framing deployment of resources towards BIPOC communities (place-specific and otherwise) including contracting
- Creating processes and tracking to increase accountability



Remnant Parcel Utilization Framework

- Stronger focus on community imperatives
- More in-depth coordination with ETOD



ETOD Strategy and Implementation Plan

- Organizational structure - core steering committee
- Strong integration with Remnant Parcels and Community Involvement Task Forces

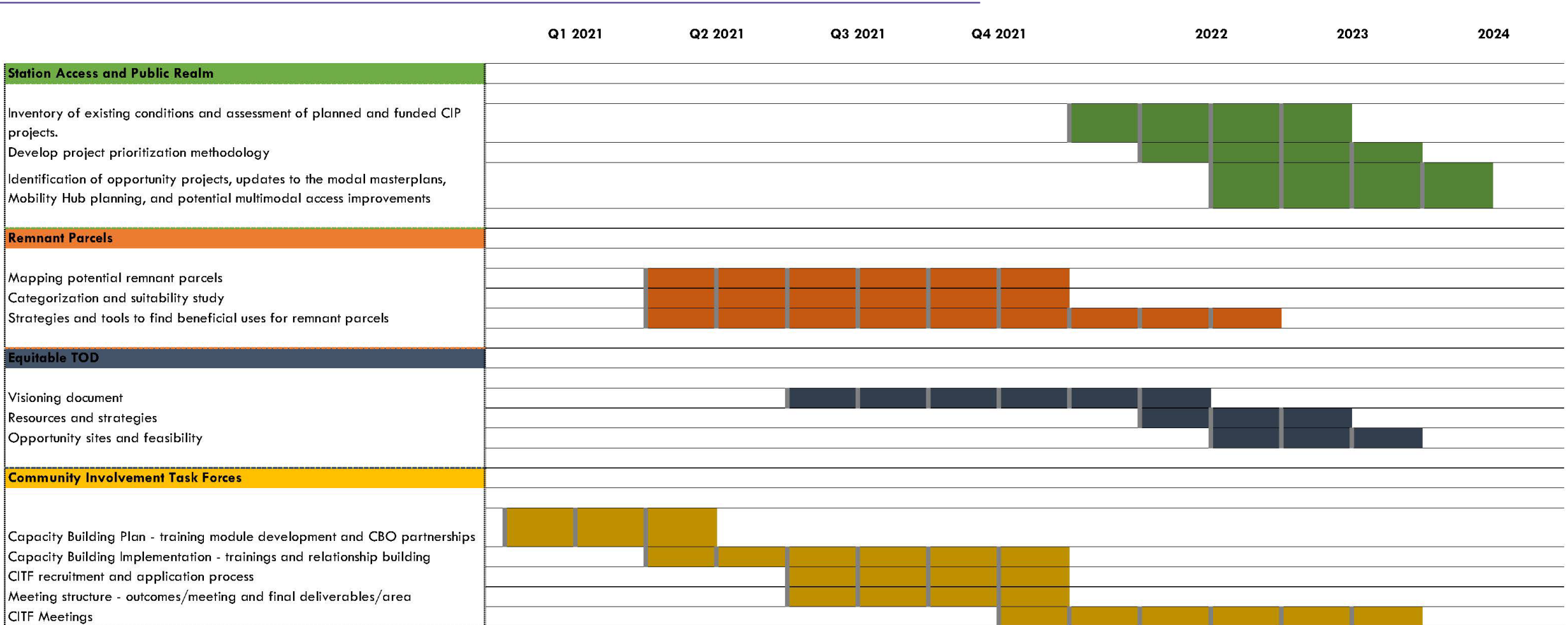


Community Involvement Task Forces

- Focus on capacity building with Community Liaisons to elevate community focus
- Heavy focus on recruitment of the young and diverse



Schedule



Next Steps

- MOA with FTA and Fund Obligation
- Coordination with Sound Transit
- Further program development/scoping
- RFP process & consultant/contractor procurement



Other Updates



Seattle

130th Street

- Working on draft plan
- Weighing options on rezone

- Realignment decision – July 2021
- 130th-specific decision – October 2021



Graham Street

- Conferring with:
 - Community and staff involved in Graham Street visioning
 - Mayor's Office
- OPCD workplan commitment
- Subject to realignment decision



Thank you

Lauren Flemister, Community Planning Manager

 206.733.9668  lauren.flemister@seattle.gov

Sound Transit: [soundtransit.org/wsblink](https://www.soundtransit.org/wsblink)

City of Seattle: [seattle.gov/lightrail](https://www.seattle.gov/lightrail)